

CASE STUDY



CLIENT: Fiege Logistics
LOCATION: Zaandam (Netherlands HQ)
PROJECT: Fiege Healthcare's new indoor Cross Dock Centre is being lit using Luci Series Industry



FIEGE

The World of Logistics

CASE STUDY

FIGE LOGISTICS - ZAANDAM

'The Luci Series Industry LED luminaries for less maintenance and lower costs of replacement.'

As a logistics linchpin in climate-controlled distribution of medical products, Fiege Nederland is committed to guaranteeing an optimal distribution process with minimal margin for error. In order to ensure accurate order-picking for such things as medicines, radioactive material for nuclear medicine, diagnostics and reagents, it is essential for packing slips and products to be readily visible, with lighting playing a significant role in this.

'Quality is paramount in the medical sector', says Niels Lindenberg, Business Development Manager Netherlands at Fiege. 'Our new Cross Dock facility in Zaandam enables us to guarantee that all products will be transported and transhipped within the applicable temperature restrictions from the point at which they are picked up to the delivery. The various products' temperature restrictions are monitored 24/7. Correct lighting is essential in that regard.'

Fiege Nederland is part of the Fiege Group, a leading European logistics service provider specializing in efficient supply chain solutions. Fiege's healthcare division uses chilled trucks and vans to deliver various medical products to medical institutions each and every day. Fiege has 70,000 m² of specialist warehouse space for medical products in the Benelux, Germany, Poland and Switzerland. Since the start of 2017, medical products from in excess of 100 suppliers have been being amassed and collected in the 3,000 m² healthcare facility in Zaandam and delivered each day to pharmacies, hospitals, medical wholesalers and individuals in their homes.



OPTIMAL ENERGY-EFFICIENCY, MINIMAL HEAT PRODUCTION

Fiege compared a variety of lighting systems for its new Cross Dock facility. Light output of 500 lux was taken as a starting point for maximum visibility, says Lindenberg. 'Due to its energy-efficiency and minimal heat production and replacement work, we preferred LED to fluorescent lighting. What's more, the heat given off in the climate-controlled rooms has to be cooled back down. The cooler LED luminaries kill two birds with one stone. After all, the cooler the lights, the less cooling we have to do.'

SAVINGS ON BOTH ENERGY AND LABOUR

It turned out that just 40 Luci Series Industry LED luminaries from Bever Innovations Industrial were enough to light the two rooms and the loading platform in Schiedam. 'We would have needed at least 100 lamps from an alternative LED product, with an expected lifespan of a mere half of that of the Luci luminaries', says Lindenberg. 'Combined with the motion detection built in as standard, the favourable Total Cost of Ownership and the local production in line with principles of Corporate Social Responsibility, opting for the Luci Series Industry was a no-brainer.' Besides a reduction in energy consumption, Lindenberg is also expecting to be able to make considerable savings in terms of labour. 'Our staff will be able to find the right products more quickly. Moreover, the reliability in the event of switching the lights off and on a lot and the lifespan (> 100,000 burning hours) of the Luci Series Industry LED luminaries will ensure less maintenance and lower costs of replacement.'

ADVANTAGES

Optimum visibility:

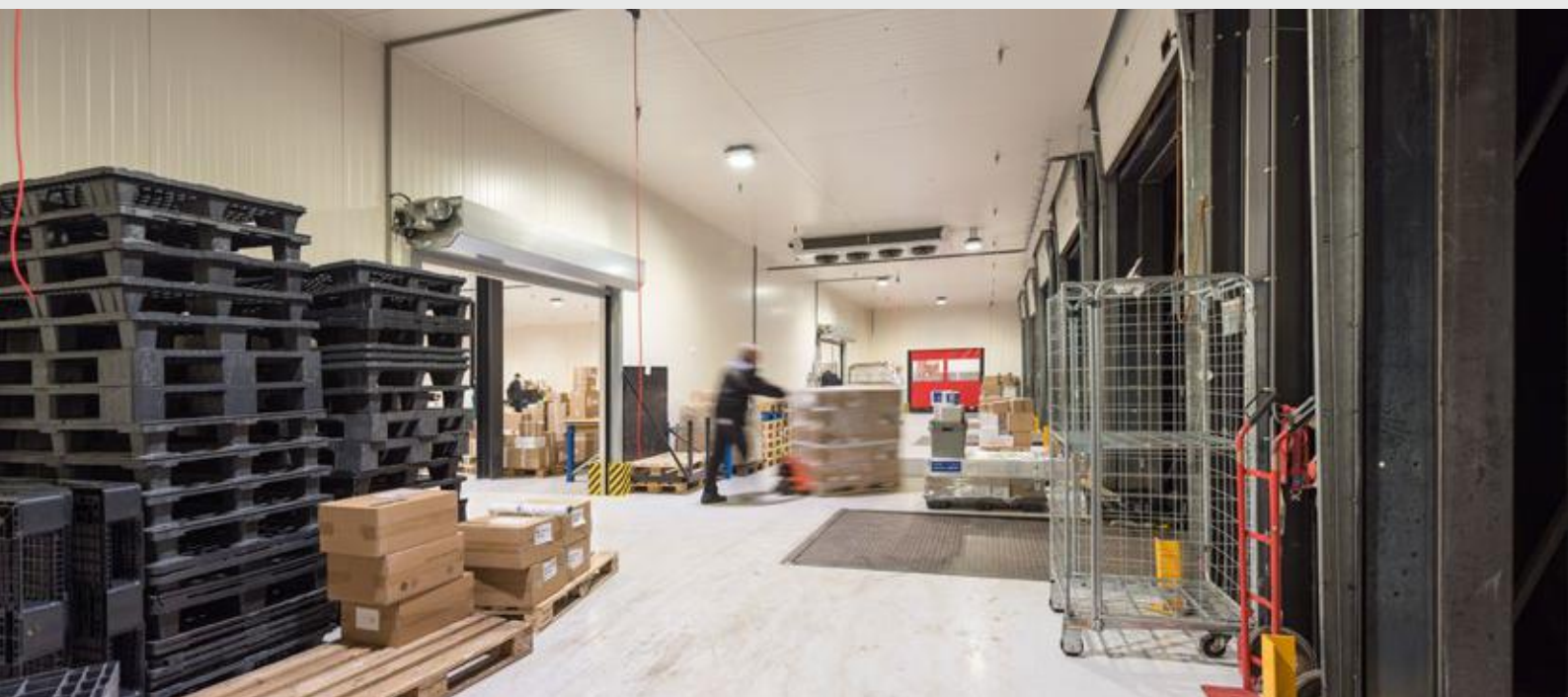
The strength, clarity and reflection of the LED fittings creates an even illumination in the room, enhancing visibility, workability and safety there.

Savings on time and labour:

The LEDs last considerably longer than conventional lighting, which saves on the costs of maintenance and replacement.

Less cooling required:

Due to the fact that the Luci luminaries give off far less heat than (for example) fluorescent lighting, considerable savings can be made on cooling.



Bever Innovations B.V.

Techniekweg 2 | 4301 RT Zierikzee
The Netherlands

Tel +31(0)111 74 54 00

info@beverinnovations.com

www.beverinnovations.com

[Find here your representative](#)